



## 7" Magnetic Hotplate Stirrer

### FEATURES

- Hot surface warning at 50°C to prevent burns
- Independent digital wheels adjust the speed and temperature
- LED digital displays the target and actual speed and temperature
- Temperature is up to 510°C and the safety temperature is 50-550°C
- The external temperature sensor PT1000 enables precise control: accuracy of  $\pm 1^{\circ}\text{C}$
- PID controller provides rapid heating and ensures long-time continuous operation
- Digital process timer allows for unsupervised operation and can be set from 0 to 99h59min
- Double over-temperature protection by the hardware and software provides high safety and reliability
- Stainless steel with ceramic coated heating plate can be resistant to high temperature, impact, and thermal shock
- Fully enclosed alloy casing provides high temperature resistance, excellent heat dissipation.
- Powerful stirring performance supports large stirring quantities up to 20L ( $\text{H}_2\text{O}$ ) and ensures a stable running of 5L ( $\text{H}_2\text{O}$ ) with the  $\Phi 8.5 \times 50\text{mm}$  stirring bar at the max. speed of 1500rpm





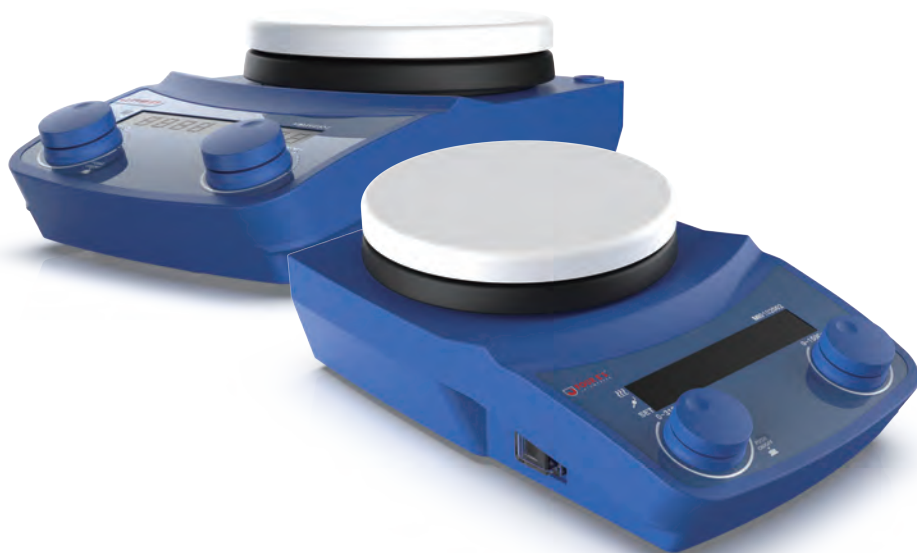
## SPECIFICATIONS

Model	MI0102005
Stirring position	1
Set-up plate dimensions [mm]	185 x 185
Set-up plate material	Stainless steel with ceramic coated
Motor type	Brushless DC motor
Max. stirring quantity (H <sub>2</sub> O) [L]	20
Max. stirring bar [L x Φ, mm]	80 x Φ9.5
Motor rating input [W]	25
Motor rating output [W]	17
Speed range[rpm]	50-1500
Speed display	LED
Heating output [W]	1000
Heating temperature range [°C]	Room temp.-510
Temperature display	LED
Temperature display accuracy [°C]	±0.1
Safety temperature [°C]	50-550
External temperature sensor	PT1000
Control accuracy with external temperature sensor PT1000[°C]	±1
Control accuracy with internal temperature sensor PT1000[°C]	±1(<100°C), 1%(≥100°C)
Hot surface warning	50°C
Time display	LED
Time range	0-99h59m
Dimensions [W x D x H, mm]	220 x 350 x 100
Protection class according to DIN EN60529	IP42
Permissible ambient temperature [°C]	5 - 40
Permissible relative humidity	80%
Voltage [VAC]	200-240/100-120
Frequency [Hz]	50/60
Power [W]	1050

## 5" Magnetic Hotplate Stirrer (Digital)

### FEATURES

- LED digital display for easy reading
- Hot surface warning to prevent burns
- High safety and strong stirring performance
- 3D digital wheel adjustment of speed and temperature
- Brushless DC motor is maintenance free and explosion proof
- Temperature is up to 310°C and the safety temperature is 50-320°C
- Double internal temperature sensor PT1000 and one external PT1000
- Enclosed heating plate design reduces the risk of liquid splashing into the equipment
- Optimized PID program control provides extremely high accuracy of temperature and speed
- Automatically identifies temperature sensor PT1000 and transfer to PT1000 operation mode
- Stainless Steel with ceramic coated heating plate allows for optimum heat transfer and easy to clean



## SPECIFICATIONS

Model	MI0102002
Stirring position	1
Set-up plate dimensions [mm]	Ø 137
Set-up plate material	Stainless Steel with ceramic coated
Motor type	Brushless DC motor
Max. stirring quantity [H <sub>2</sub> O, L]	20
Max. stirring bar [L x Φ, mm]	55*10
Motor rating input [W]	30
Motor rating output [W]	20
Speed range[rpm]	50-1500
Speed display	LED
Heating output [W]	600
Heating temperature range	Room temp.-310°C
Temperature display	LED
Temperature display accuracy	±0.1
Safety temperature [°C]	50-320
External temperature sensor	PT1000
Control accuracy with external temperature sensor PT1000[°C]	±1
Hot surface warning	50°C
Permissible ambient temperature [°C]	5 - 40
Permissible relative humidity	80%
Protection class according to DIN EN 60529	IP 42
Voltage [VAC]	200-240/100-120
Frequency [Hz]	50/60
Power [W]	650
Dimensions [W x D x H, mm]	250 x 148 x 85
Weight [kg]	1.9



## 5" Magnetic Hotplate Stirrer (Economy version)

### FEATURES

- LED digital display for easy reading
- Hot surface warning to prevent burns
- High safety and strong stirring performance
- 3D digital wheel adjustment of speed and temperature
- Brushless DC motor is maintenance free and explosion proof
- Temperature is up to 310°C and the safety temperature is 50-320°C
- Double internal temperature sensor PT1000 and one external PT1000
- Enclosed heating plate design reduces the risk of liquid splashing into the equipment
- Optimized PID program control provides extremely high accuracy of temperature and speed
- Automatically identifies temperature sensor PT1000 and transfer to PT1000 operation mode
- Stainless Steel with ceramic coated heating plate allows for optimum heat transfer and easy to clean



## SPECIFICATIONS

Model	MI0102003
Stirring position	1
Set-up plate dimensions [mm]	Ø 137
Set-up plate material	Stainless Steel with ceramic coated
Motor type	DC motor
Max. stirring quantity [H <sub>2</sub> O, L]	5
Max. stirring bar [L x Φ, mm]	55x10
Motor rating input [W]	3
Motor rating output [W]	2.5
Speed range[rpm]	100-1500
Speed display	LED
Heating output [W]	600
Heating temperature range	Room temp.-280°C
Temperature display	LED
Temperature display accuracy	±0.1
Safety temperature [°C]	50-320
External temperature sensor	Optional
Control accuracy with external temperature sensor PT1000[°C]	±1
Hot surface warning	50°C
Permissible ambient temperature [°C]	5 - 40
Permissible relative humidity	80%
Protection class according to DIN EN 60529	IP 42
Voltage [VAC]	200-240/100-120
Frequency [Hz]	50/60
Power [W]	630
Dimensions [W x D x H, mm]	268 x 160 x 85
Weight [kg]	1.8



## 5" Magnetic Hotplate Stirrer (Analog)

---

### FEATURES

- Hot surface warning to prevent burns
- High safety and strong stirring performance
- Double internal temperature sensor PT1000
- 3D digital wheel adjustment of speed and temperature
- Brushless DC motor is maintenance-free and explosion-proof
- Temperature is up to 310°C and the safety temperature is 50-320°C
- Enclosed heating plate design reduces the risk of liquid splashing into the equipment
- Optimized PID program control provides extremely high accuracy of temperature and speed
- Stainless Steel with ceramic coated heating plate allows for optimum heat transfer and easy to clean



## SPECIFICATIONS

Model	MI0102010
Stirring position	1
Set-up plate dimensions [mm]	Ø 137
Set-up plate material	Stainless Steel with ceramic coated
Motor type	Brushless DC motor
Max. stirring quantity [H <sub>2</sub> O, L]	20
Max. stirring bar [L x Φ, mm]	55*10
Motor rating input [W]	30
Motor rating output [W]	20
Speed range[rpm]	50-1500
Speed display	Scale
Heating output [W]	600
Heating temperature range	Room temp.-310°C
Temperature display	Scale
Temperature display accuracy	/
Safety temperature [°C]	50-320
External temperature sensor	/
Control accuracy with external temperature sensor PT1000[°C]	/
Hot surface warning	50°C
Permissible ambient temperature [°C]	5 - 40
Permissible relative humidity	80%
Protection class according to DIN EN 60529	IP 42
Voltage [VAC]	200-240/100-120
Frequency [Hz]	50/60
Power [W]	650
Dimensions [W x D x H, mm]	250 x 148 x 85
Weight [kg]	1.9





# 10-position Magnetic Hotplate Stirrer

## FEATURES

- 10 positions supports synchronous heating and stirring
- Wear free magnetic coils and the magnetic coil technology provides noiseless and consistent stirring on all positions
- The max. heating temperature is 120°C and the sample temperature can be up to 70°C at maximum
- The max. speed is 1200rpm and the increment is 10rpm
- Economic mode can have the work plate automatic heating at low temperature
- Stainless steel with silicone work plate is skid-resistant and allows excellent heating uniformity
- Comes with Reverse Rotation option



## SPECIFICATIONS

Model	MS310
Stirring position	10
Work plate material	Stainless steel with silicone
Work plate dimension [L x W, mm]	470×205
Driving mode	Electromagnetic drive
Max. stirring quantity [L]	0.4 x 10
Heating temperature [°C]	Room temp. - 120
Safety temperature [°C]	150
Speed range [rpm]	0-1200
Speed increment [rpm]	10
Stirring position distance [mm]	93
Max. magnetic bar [L, mm]	30
Speed display	LED
Time display	LED
Economic mode	Yes
Adjustable Reverse rotation	Yes
Operation type	Continuous / timed operation
Time range	0-99h59min
Voltage [VAC]	100-120/200-240
Frequency [Hz]	50/60
Heating Power [W]	500
Power [W]	580
Permissible ambient temperature [°C]	5-40
Permissible relative humidity	80%
Protection class	IP30
Dimension [L x W x H, mm]	630x210x70
Weight [kg]	10

